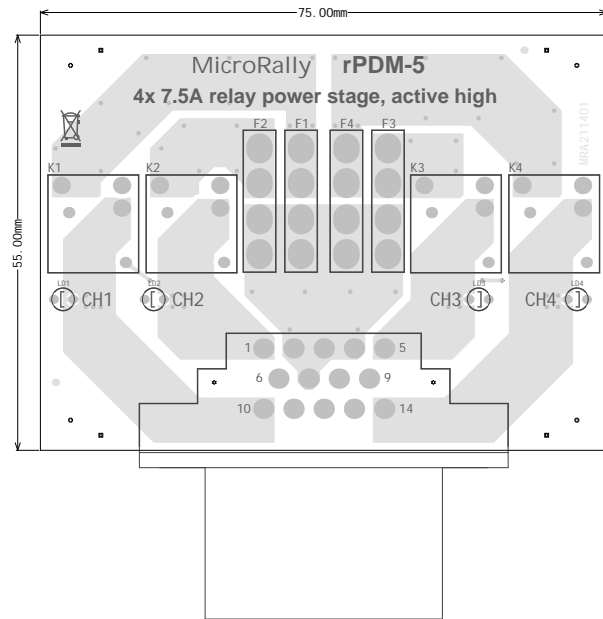
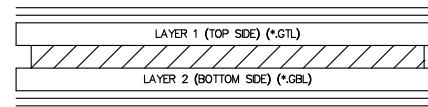


# GERBER NOTES



Symbol	Count	Hole Size	Plated	Hole Type	Via/Pad
◇	54	0.300mm	PTH	Round	Via
⊗	8	0.750mm	PTH	Round	Pad
○	8	0.800mm	PTH	Round	Pad
■	4	1.152mm	NPTH	Round	Pad
□	12	1.300mm	PTH	Round	Pad
⊗	14	1.600mm	PTH	Round	Pad
▽	16	2.500mm	PTH	Round	Pad
☆	2	2.850mm	NPTH	Round	Pad
⊕	4	3.200mm	NPTH	Round	Pad
	122 Total				

1.0 OZ L1  
1.50 mm Core - FR4  
1.0 OZ L2



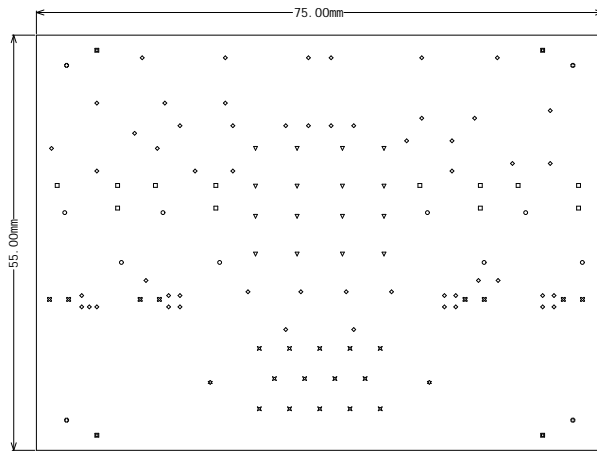
SILKSCREEN (TOP SIDE) (\*GTO)  
SOLDERMASK (TOP SIDE) (\*GTS)  
1.6 mm +/- 10% LAYER DETAIL  
2 LAYERS  
SOLDERMASK (BOTTOM SIDE) (\*G2S)  
SILKSCREEN (BOTTOM SIDE) (\*G2O)  
PASTE (BOTTOM SIDE) (\*G2P)

## NOTES: (UNLESS OTHERWISE SPECIFIED)

- THIS IS 2 LAYER BOARD
- MATERIAL: FR4, TG 150 DEGREE C MIN
- FR4 DIELECTRIC CONSTANT NOT SPECIFIED
- FINISHED BOARD THICKNESS TO BE 1.60MM +/- 10%
- TRACE WIDTHS IN ARTWORK ARE FINISHED SIZES
- SEE FILM FOR LAYER SEQUENCE AND COPPER THICKNESSES (SHOWN BEFORE PLATING)
- MIN TRACE/SPACE 0.60/0.25MM
- SEE DRILL CHART FOR FINISHED HOLE SIZES
- MIN DRILL 0.75MM
- HOLE TOLERANCE IS +/-3MIL UNLESS OTHERWISE SPECIFIED  
HOLE COPPER THICKNESS MIN 0.7MIL  
SLOT TOLERANCE +/-0.1MM  
BORDER OUTLINE TOLERANCE +/-0.15MM
- SURFACE PLATING: HASL, Pb FREE
- SOLDERMASK: LPI, BOTH SIDES. COLOR GREEN
- SILKSCREEN: TOP AND BOTTOM SIDE. COLOR WHITE
- ALL BOARDS MUST BE ELECTRICALLY TESTED FOR ISOLATION (SHORTS) AND CONTINUITY (OPENS)

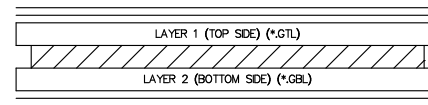
Project: rPDM-5	
Author: Andis Jargans	Revision: 1
Date: 14.04.2021	Size: A4
File: rPDM-5_r1.PcbDoc	MicroRally

# GERBER NOTES



Symbol	Count	Hole Size	Plated	Hole Type	Via/Pad
◇	54	0.300mm	PTH	Round	Via
⊗	8	0.750mm	PTH	Round	Pad
○	8	0.800mm	PTH	Round	Pad
■	4	1.152mm	NPTH	Round	Pad
□	12	1.300mm	PTH	Round	Pad
⊗	14	1.600mm	PTH	Round	Pad
▽	16	2.500mm	PTH	Round	Pad
☆	2	2.850mm	NPTH	Round	Pad
⊕	4	3.200mm	NPTH	Round	Pad
	122 Total				

1.0 OZ L1  
 1.50 mm Core - FR4  
 1.0 OZ L2



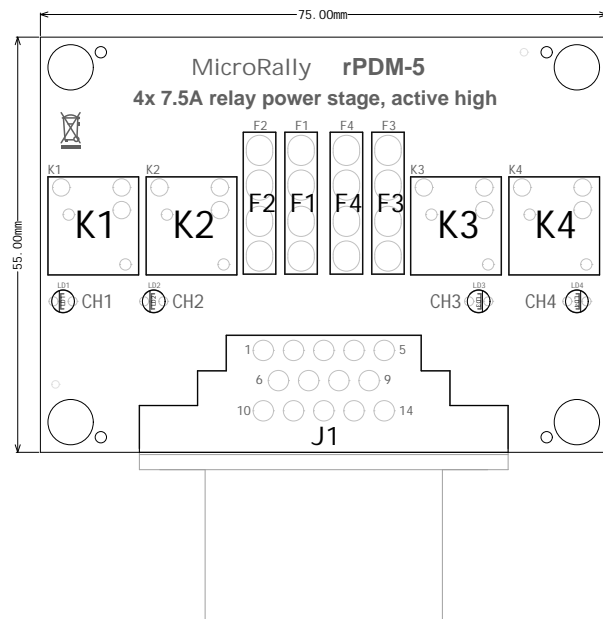
1.6 mm +/- 10%  
 SILKSCREEN (TOP SIDE) (\*GTO)  
 SOLDERMASK (TOP SIDE) (\*GTS)  
 LAYER DETAIL  
 2 LAYERS  
 SOLDERMASK (BOTTOM SIDE) (\*G2S)  
 SILKSCREEN (BOTTOM SIDE) (\*G2O)  
 PASTE (BOTTOM SIDE) (\*G2P)

## NOTES: (UNLESS OTHERWISE SPECIFIED)

- THIS IS 2 LAYER BOARD
- MATERIAL: FR4, TG 150 DEGREE C MIN
- FR4 DIELECTRIC CONSTANT NOT SPECIFIED
- FINISHED BOARD THICKNESS TO BE 1.60MM +/- 10%
- TRACE WIDTHS IN ARTWORK ARE FINISHED SIZES
- SEE FILM FOR LAYER SEQUENCE AND COPPER THICKNESSES (SHOWN BEFORE PLATING)
- MIN TRACE/SPACE 0.60/0.25MM
- SEE DRILL CHART FOR FINISHED HOLE SIZES
- MIN DRILL 0.75MM
- HOLE TOLERANCE IS +/-3MIL UNLESS OTHERWISE SPECIFIED  
 HOLE COPPER THICKNESS MIN 0.7MIL  
 SLOT TOLERANCE +/-0.1MM  
 BORDER OUTLINE TOLERANCE +/-0.15MM
- SURFACE PLATING: HASL, Pb FREE
- SOLDERMASK: LPI, BOTH SIDES. COLOR GREEN
- SILKSCREEN: TOP AND BOTTOM SIDE. COLOR WHITE
- ALL BOARDS MUST BE ELECTRICALLY TESTED FOR ISOLATION (SHORTS) AND CONTINUITY (OPENS)

Project: rPDM-5	
Author: Andis Jargans	Revision: 1
Date: 14.04.2021	Size: A4
File: rPDM-5_r1.PcbDoc	Microwally

# ASSEMBLY NOTES



Project: rPDM-5	
Author: Andi s Jargans	Revisi on: 1
Date: 14. 04. 2021	Size: A4
File: rPDM-5_r1. PcbDoc	MicroRally

**MicroRally**

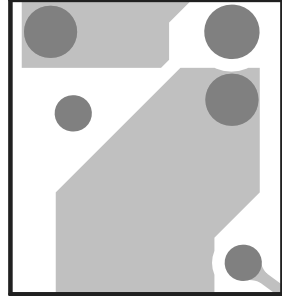
**rPDM-5**

**4x 7.5A relay power stage, active high**

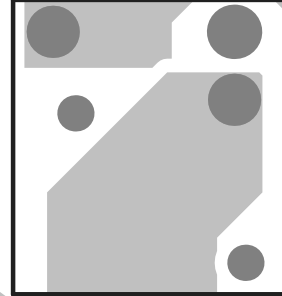
MRA211401



K1



K2



F2



F1



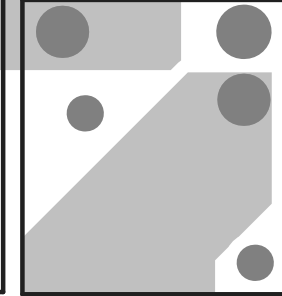
F4



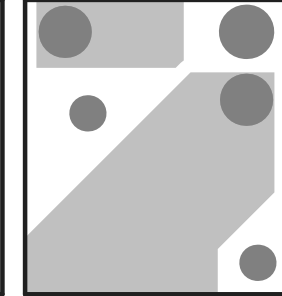
F3



K3



K4



LD1



CH1

LD2



CH2

LD3



CH3

LD4



CH4

1

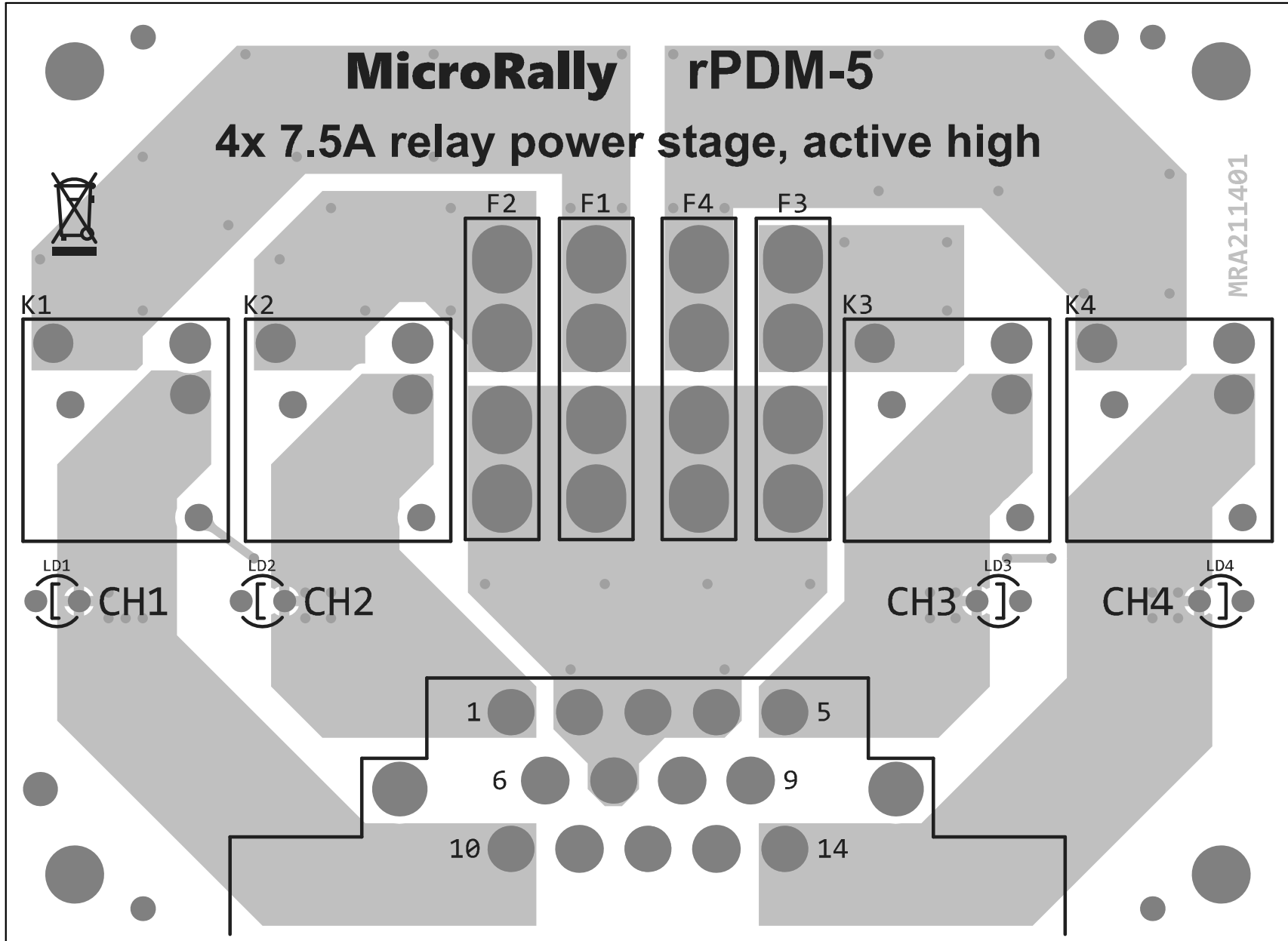
6

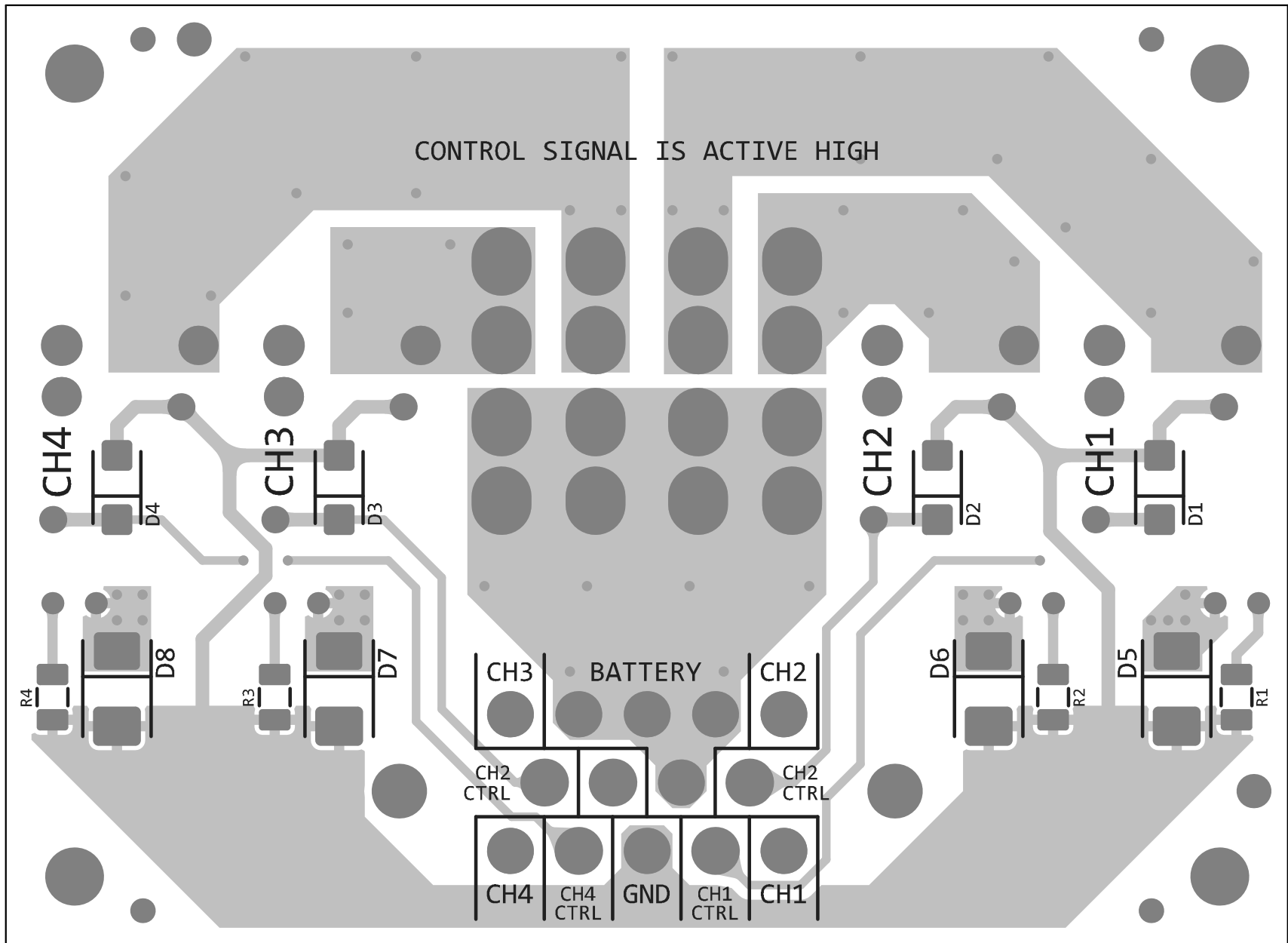
10

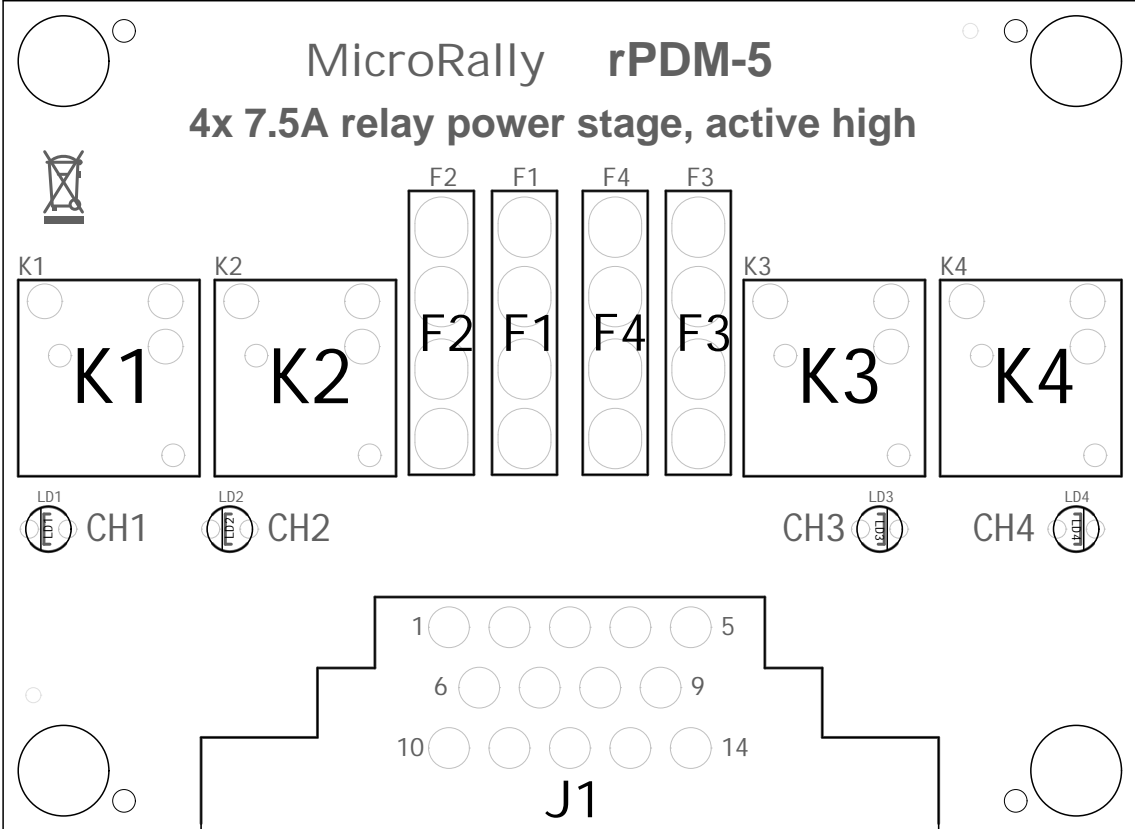
5

9

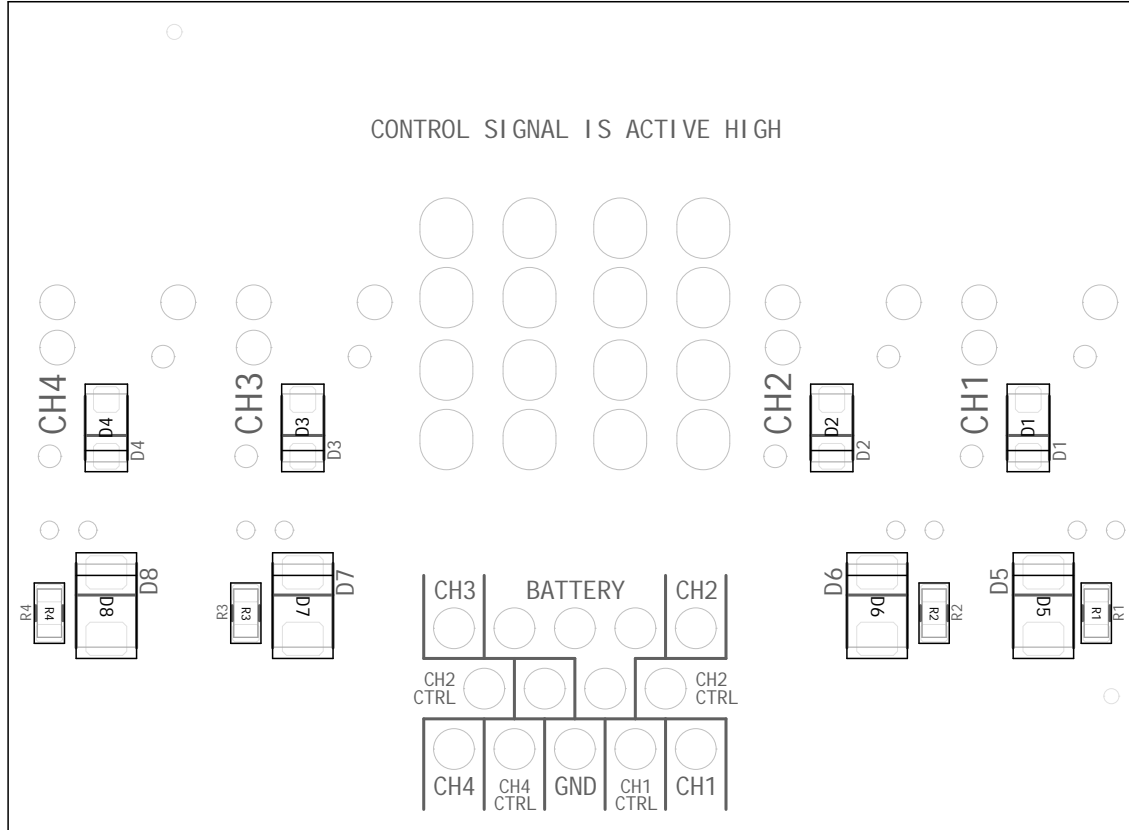
14

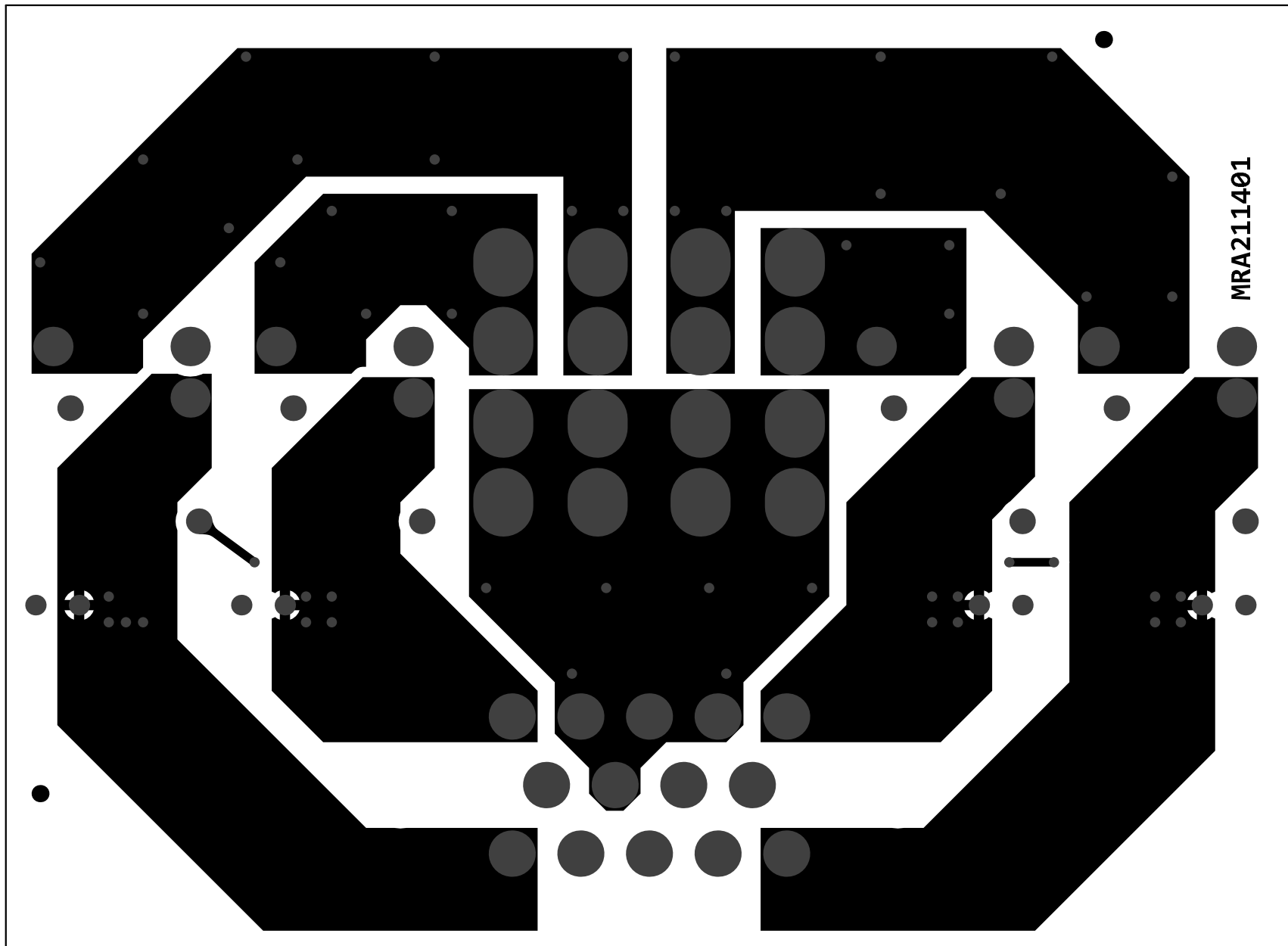




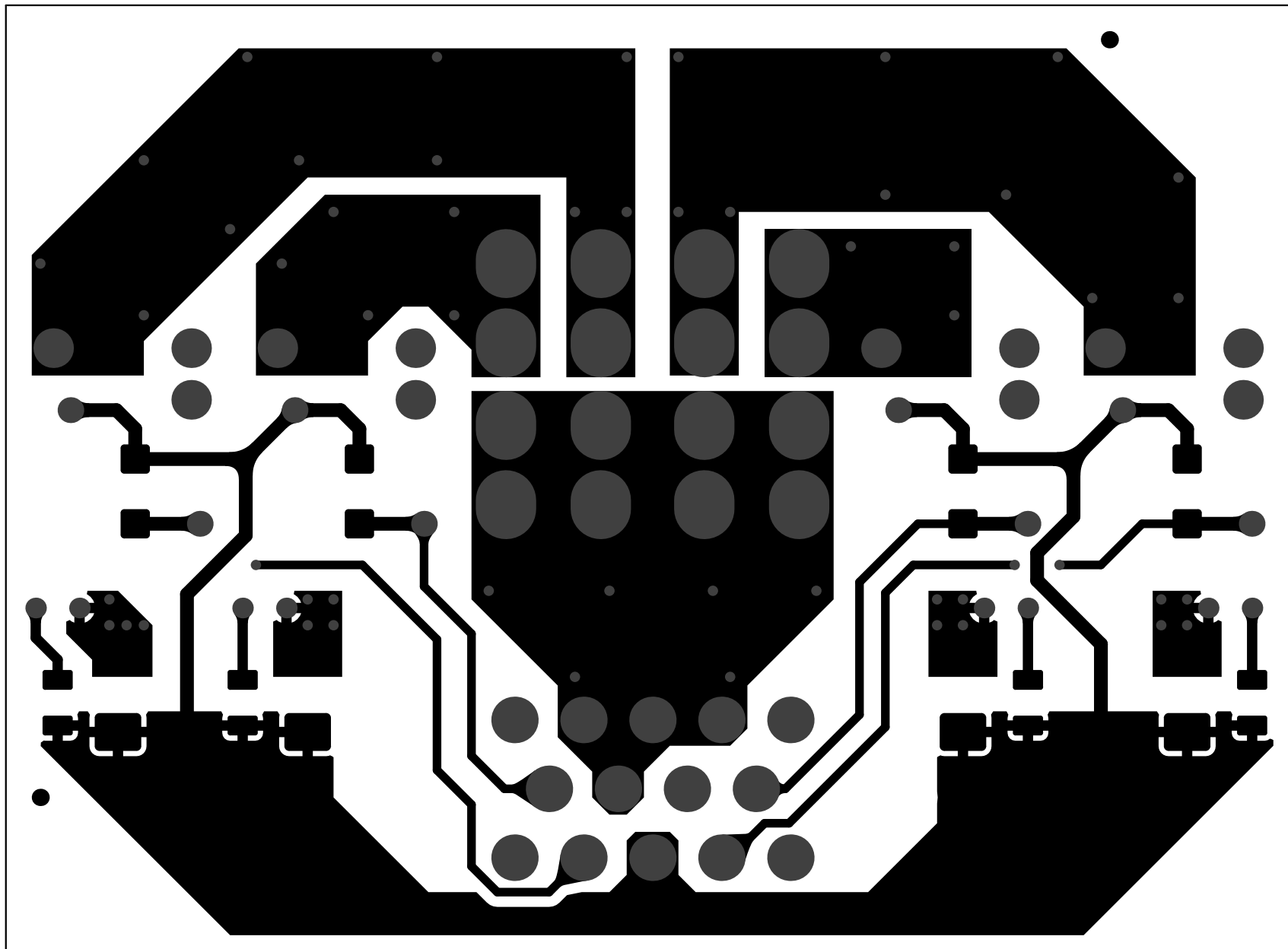


CONTROL SIGNAL IS ACTIVE HIGH





MRA211401



# MicroRally rPDM-5

4x 7.5A relay power stage, active high

MRA211401



K1



K2



F2



F1



F4



F3



K3



K4



CH1



CH2



CH3



CH4

