

DESIGN NOTES

A

A

B

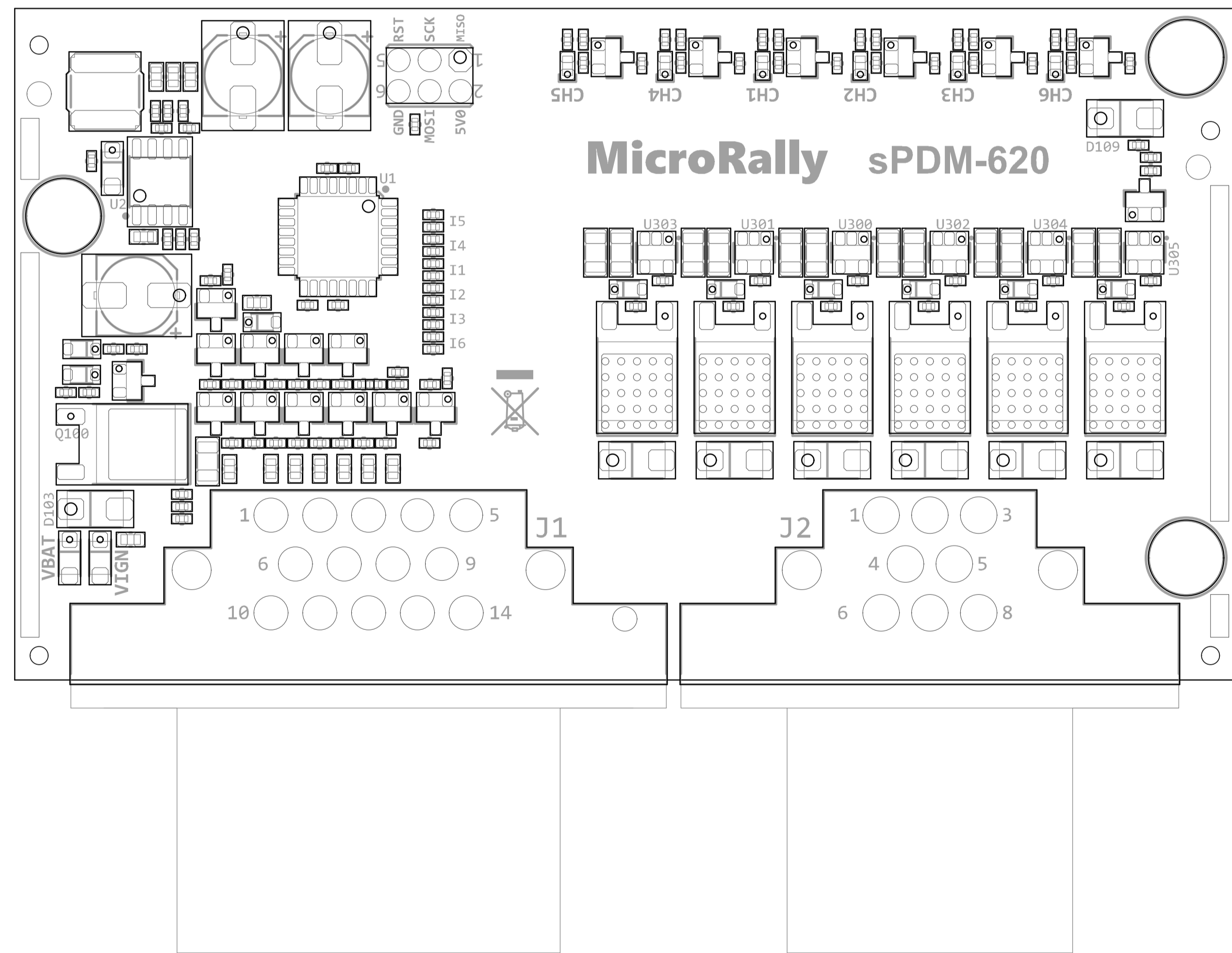
B

C

C

D

D



Title: PCB Drawing			MicroRally
Project: sPDM-620			
Revision: r1	Size: A4	Scale: 1:1	Engineer: Andis Zile
File: sPDM-620.PcbDoc			Date: 10.04.2024

ASSEMBLY NOTES

A

A

B

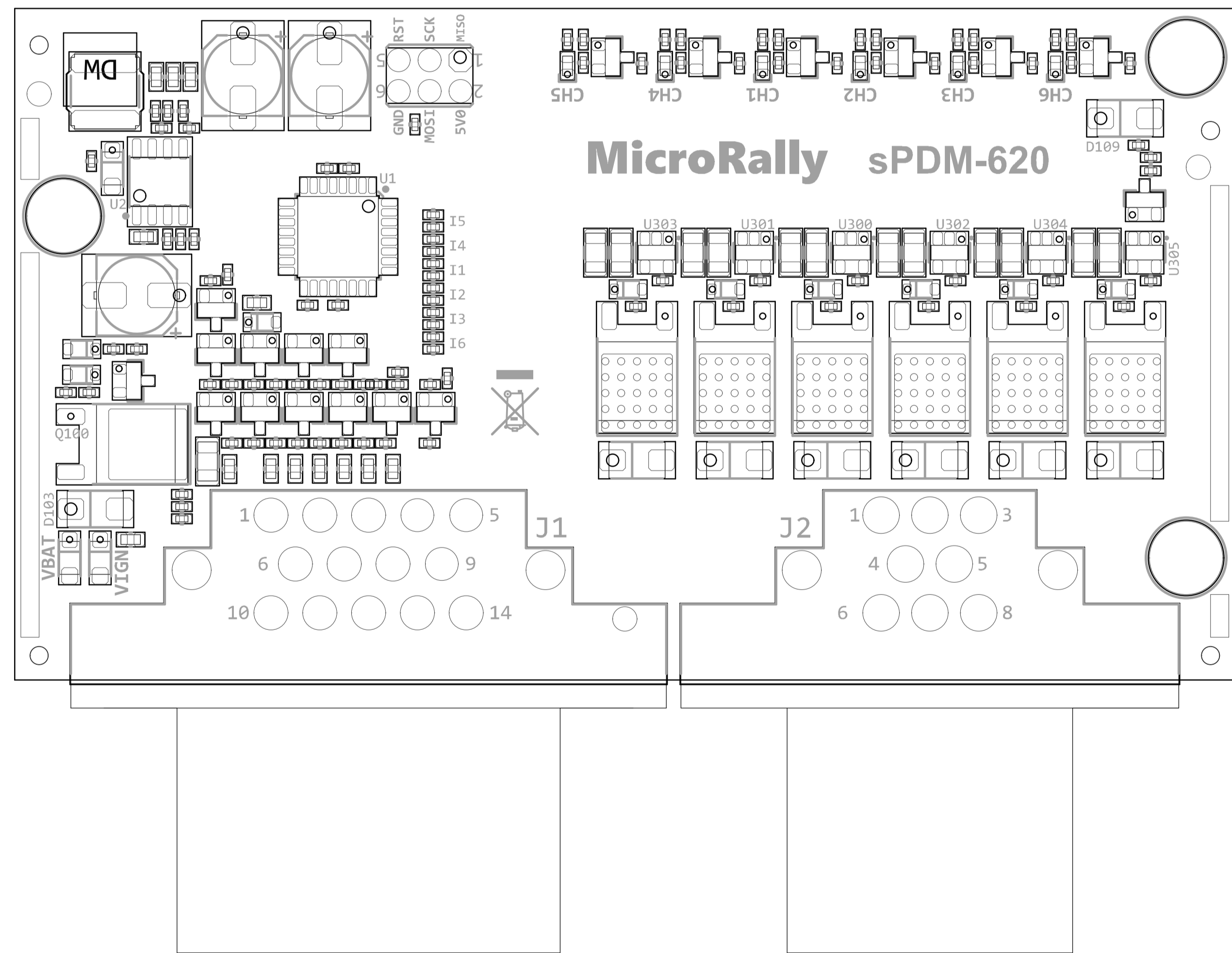
B

C

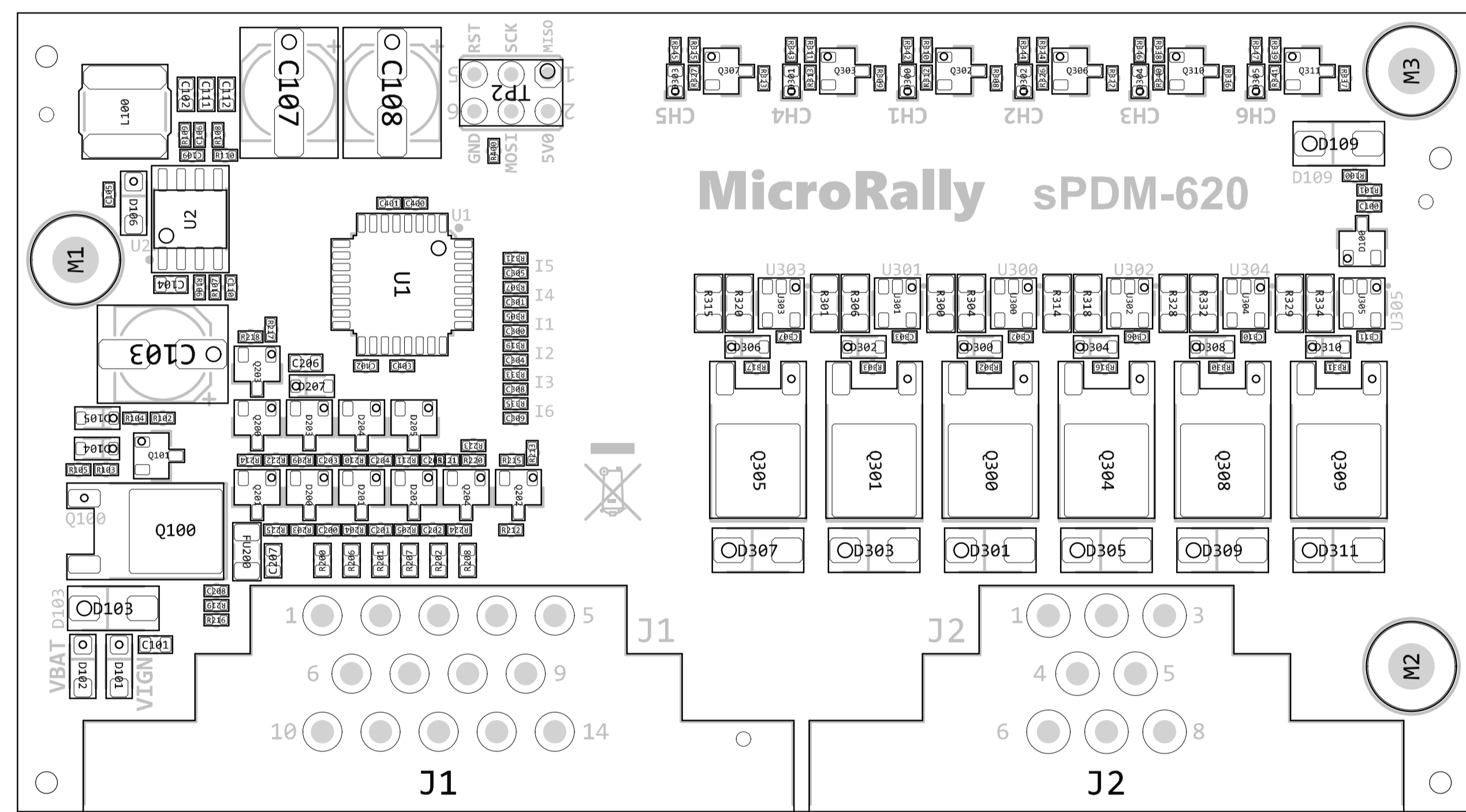
C

D

D



Title: PCB Drawing			MicroRally
Project: sPDM-620			
Revision: r1	Size: A4	Scale: 1:1	Engineer: Andis Zile
File: sPDM-620.PcbDoc			Date: 10.04.2024



Title: PCB Drawing			MicroRally
Project: sPDM-620			
Revision: r1	Size: A4	Scale: 1:1	Engineer: Andis Zile
File: sPDM-620.PcbDoc			Date: 10.04.2024

4

3

2

1

D

C

B

A

4

3

2

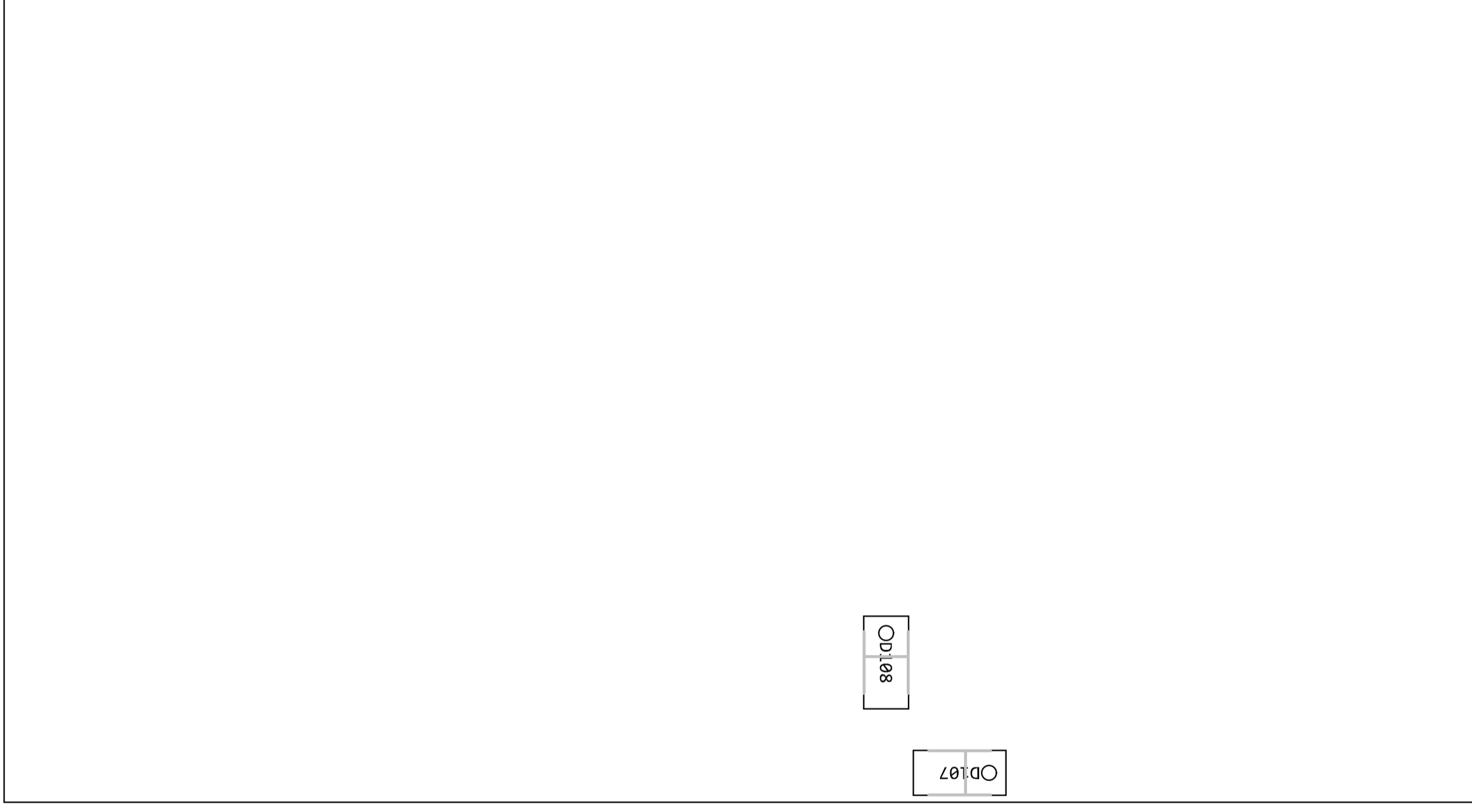
1

D

C

B

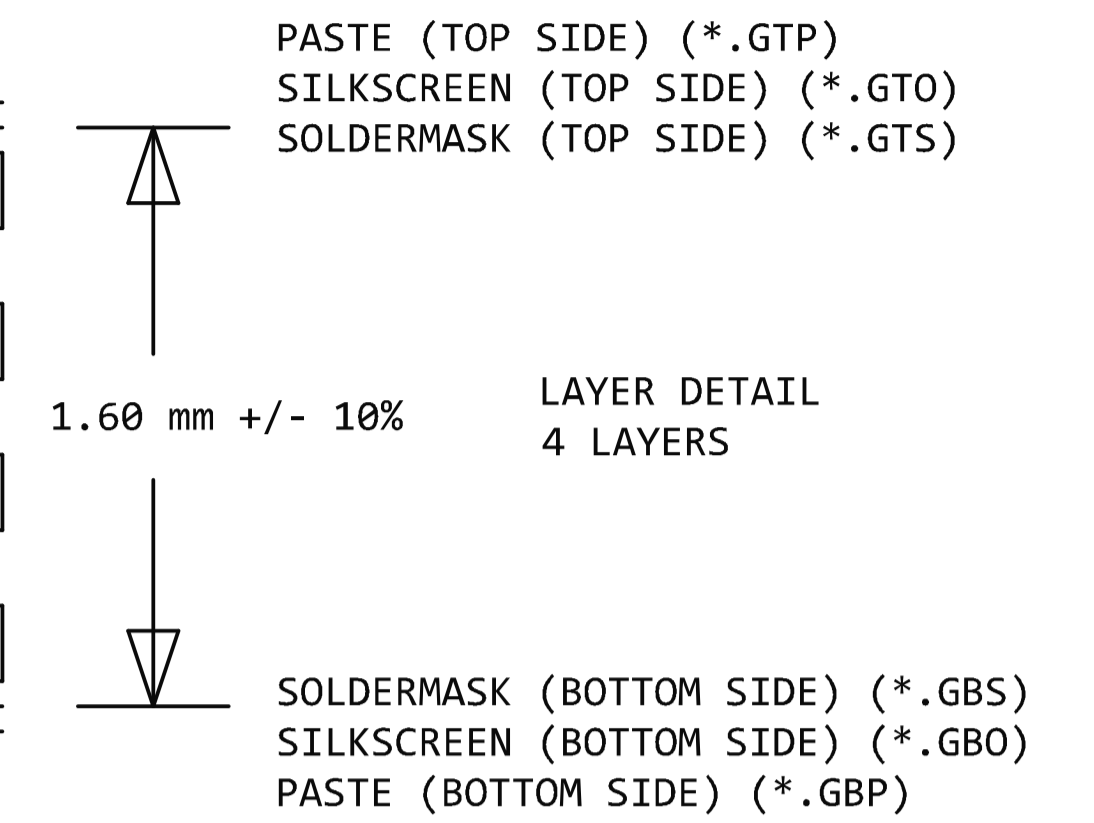
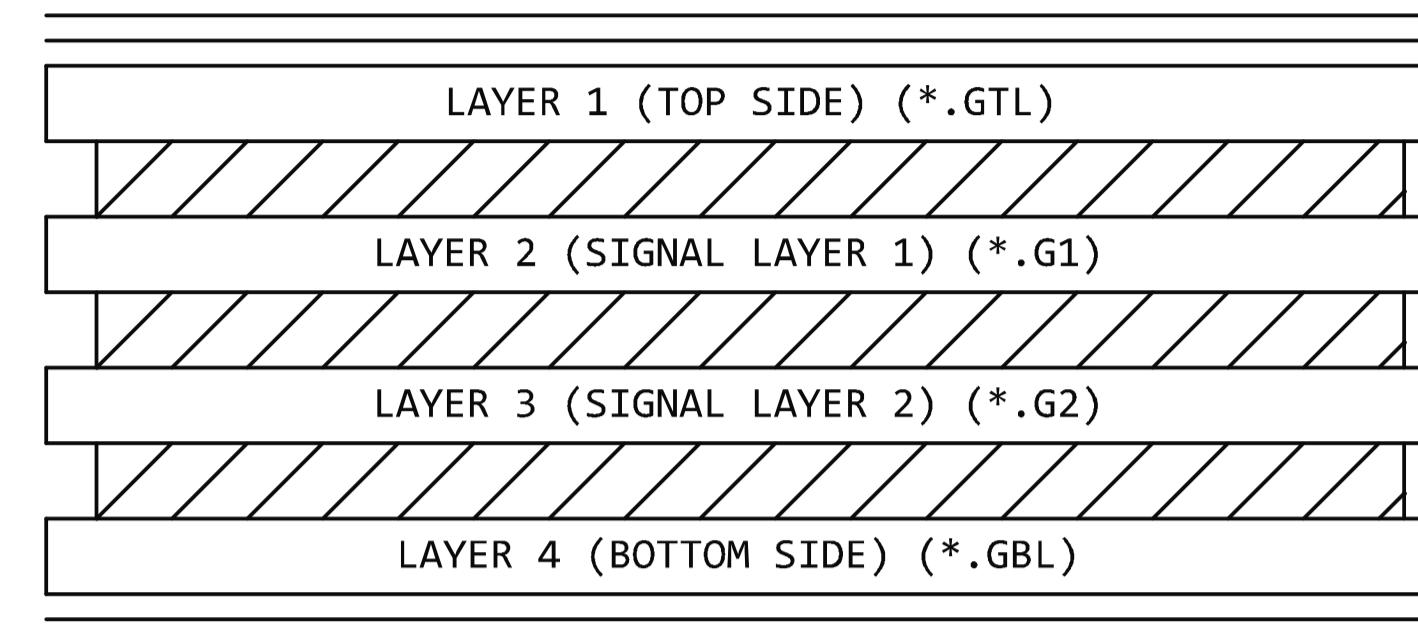
File:SPDM-620.PcbDoc		Date:10.04.2024	
Revision:r1	Size:A4	Scale:1:1	Engineer:Andis Zile
Project:SPDM-620		Title:PCB Drawing	
Microraily			



GERBER NOTES

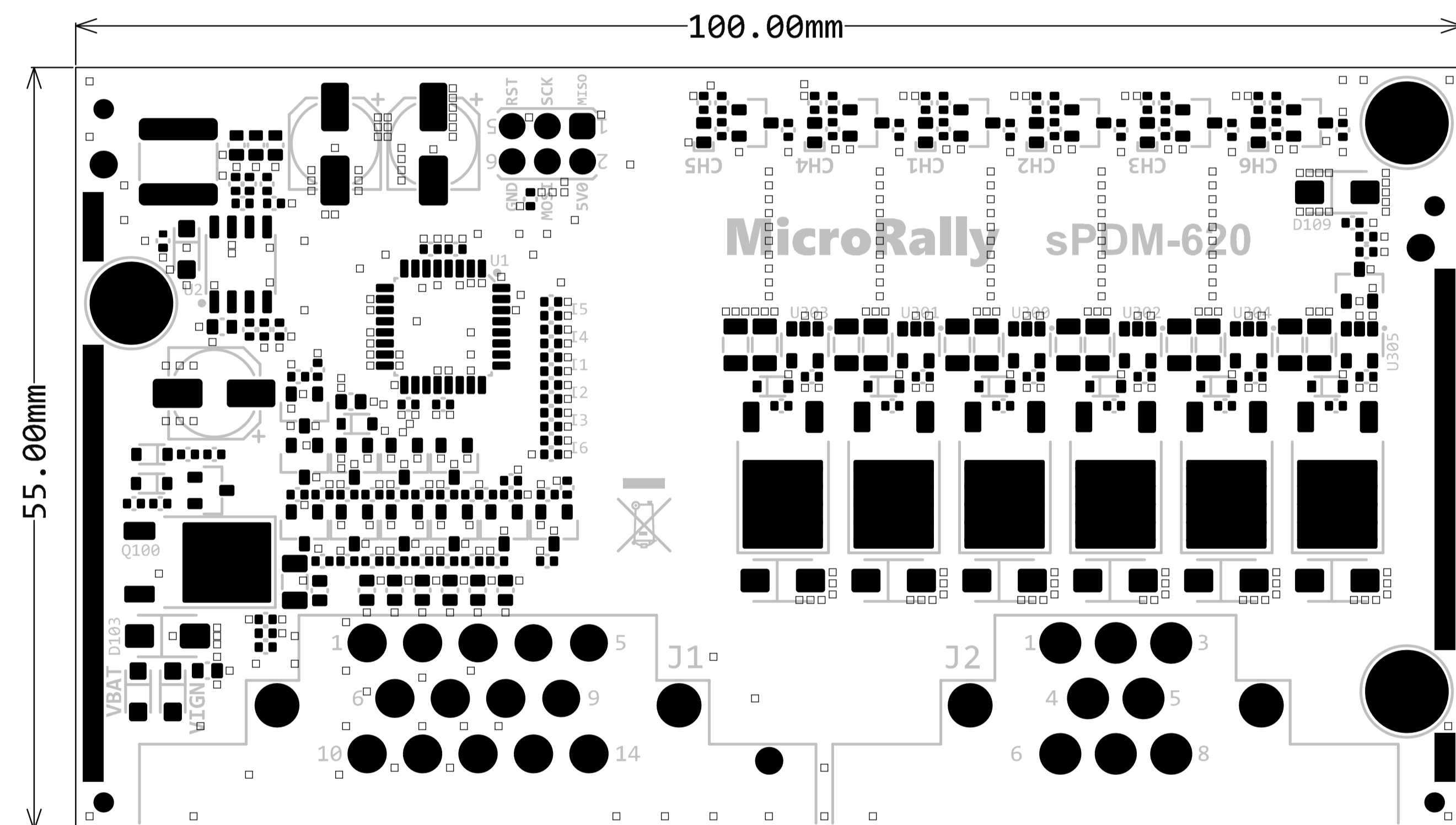
Symbol	Count	Hole Size	Plated	Hole Type	Via/Pad
□	599	0.30mm	PTH	Round	Via
▽	22	1.60mm	PTH	Round	Pad
◇	6	1.00mm	PTH	Round	Pad
✕	4	1.15mm	NPTH	Round	Pad
☆	4	2.85mm	NPTH	Round	Pad
⊕	3	3.20mm	PTH	Round	Pad
	638 Total				

1.0 OZ L1
 0.21 mm Prepreg - FR4
 1.0 OZ L2
 1.065 mm Core - FR4
 1.0 OZ L3
 0.21 mm Prepreg - FR4
 1.0 OZ L4



NOTES:

- THIS IS 4 LAYER BOARD
- MATERIAL: FR4, TG 150 DEGREE C MIN
- FR4 DIELECTRIC CONSTANT NOT SPECIFIED
- FINISHED BOARD THICKNESS TO BE 1.60MM +/- 10%
- TRACE WIDTHS IN ARTWORK ARE FINISHED SIZES
- SEE FILM FOR LAYER SEQUENCE AND COPPER THICKNESSES (SHOWN AFTER PLATING)
- MIN TRACE/SPACE 0.20/0.20 MM
- SEE DRILL CHART FOR FINISHED HOLE SIZES
- MIN DRILL 0.25MM
- MAX ALLOWABLE BOW AND TWIST FOR COMPLETE PANEL 0.75%
- SURFACE PLATING: LEAD FREE HASL
- SOLDERMASK: LPI, BOTH SIDES. COLOR GREEN
- SILKSCREEN: TOP SIDE. COLOR WHITE
- FABRICATE PER THE LATEST REVISION OF IPC-6012 (IPC-6018 FOR HDI BOARDS) CLASS 2
- BOARDS MUST COMPLY WITH UL 94V-0.
- MFR UL LOGO, UL MARKING, DATE CODE (YYWW), AND LAMINATE PART NUMBER TO BE PLACED IN SILKSCREEN ON TOP SIDE
- BOARDS MUST COMPLY WITH THE LATEST REVISION OF THE ROHS DIRECTIVE
- ALL BOARDS MUST BE ELECTRICALLY TESTED FOR ISOLATION (SHORTS) AND CONTINUITY (OPENS)
- COMPLETE BOARDS TO BE HANDLED AND PACKED AS PER IPC-1601
- SPECIFY USED LAMINATE SHEET SIZE AND UTILIZATION PERCENTAGE IN THE QUOTE SUBMITTED
- PRODUCTION (WORKING) GERBER FILES REQUIRE PRIOR MANUFACTURING APPROVAL FROM THE DESIGNER
- THIEVING NOT ALLOWED
- ANY CHANGES TO THE STACK-UP AND DK VALUE SPECIFIED MUST BE APPROVED BY THE DESIGNER



Title: PCB Drawing			MicroRally
Project: sPDM-620			
Revision: r1	Size: A4	Scale: 1:1	Engineer: Andis Zile
File: sPDM-620.PcbDoc			Date: 10.04.2024

1

2

3

4

A

A

B

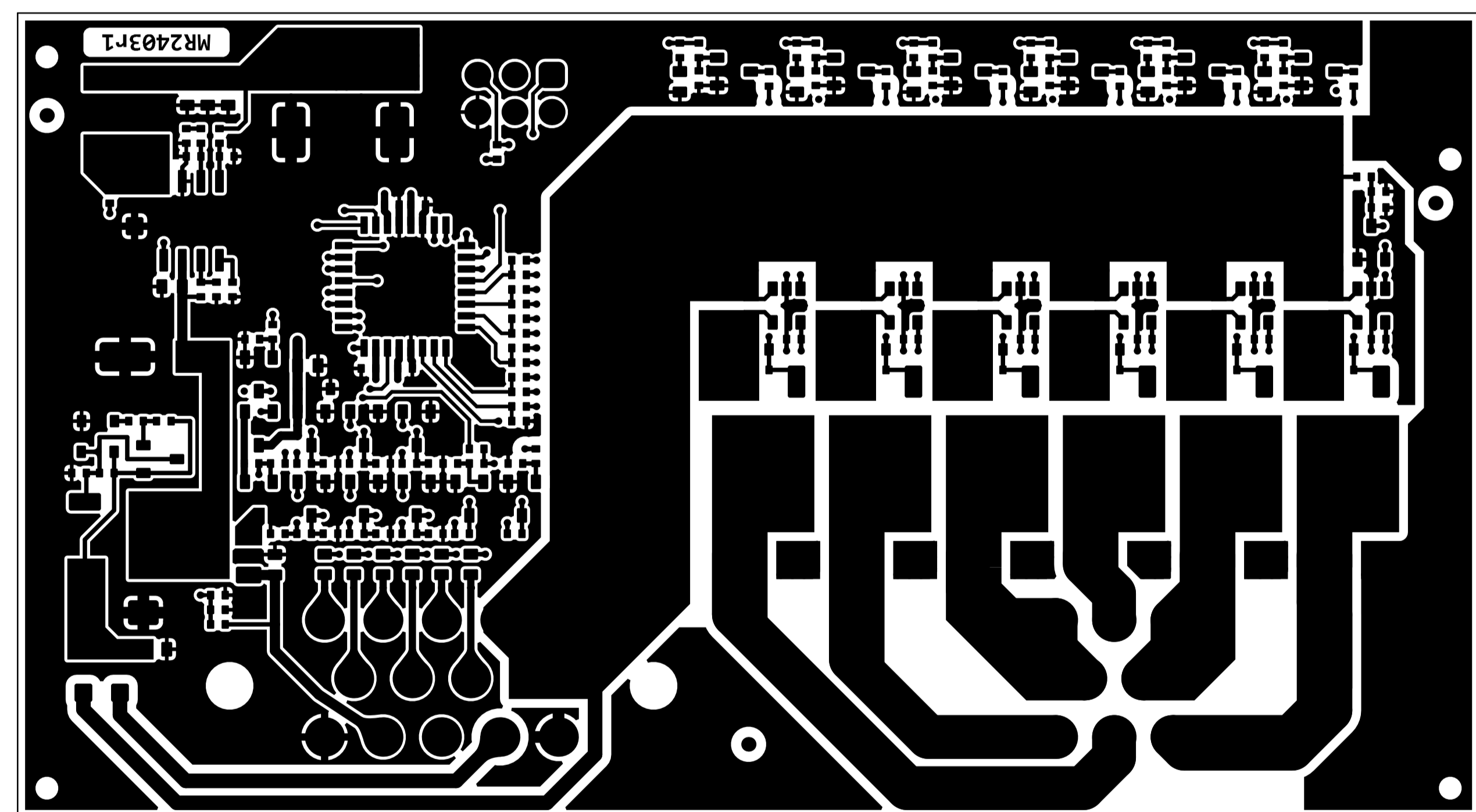
B

C

C

D

D



Title: PCB Drawing			MicroRally
Project: sPDM-620			
Revision: r1	Size: A4	Scale: 1:1	Engineer: Andis Zile
File: sPDM-620.PcbDoc			Date: 10.04.2024

1

2

3

4

1

2

3

4

A

A

B

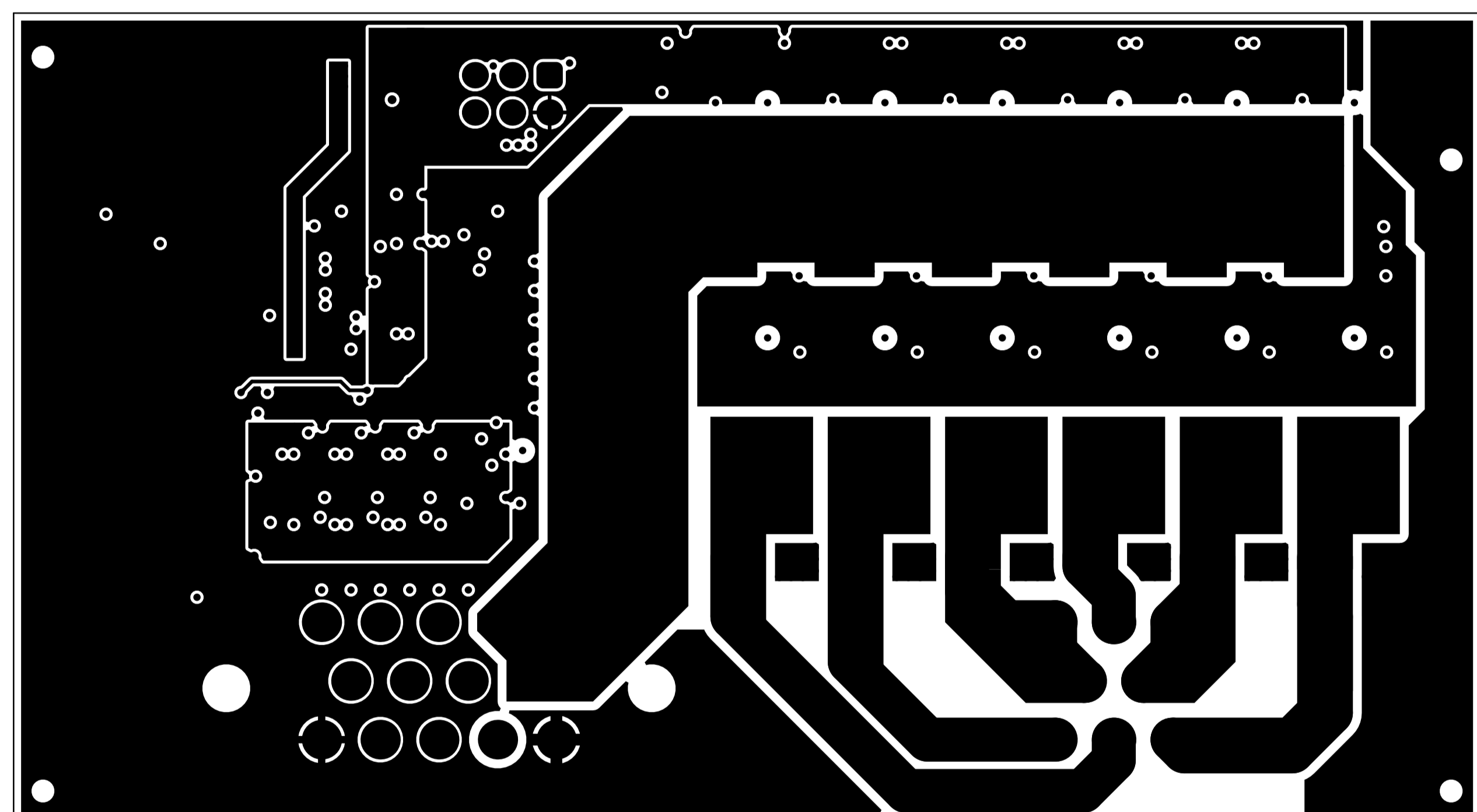
B

C

C

D

D



Title: PCB Drawing			MicroRally
Project: sPDM-620			
Revision: r1	Size: A4	Scale: 1:1	Engineer: Andis Zile
File: sPDM-620.PcbDoc			Date: 10.04.2024

1

2

3

4

1

2

3

4

A

A

B

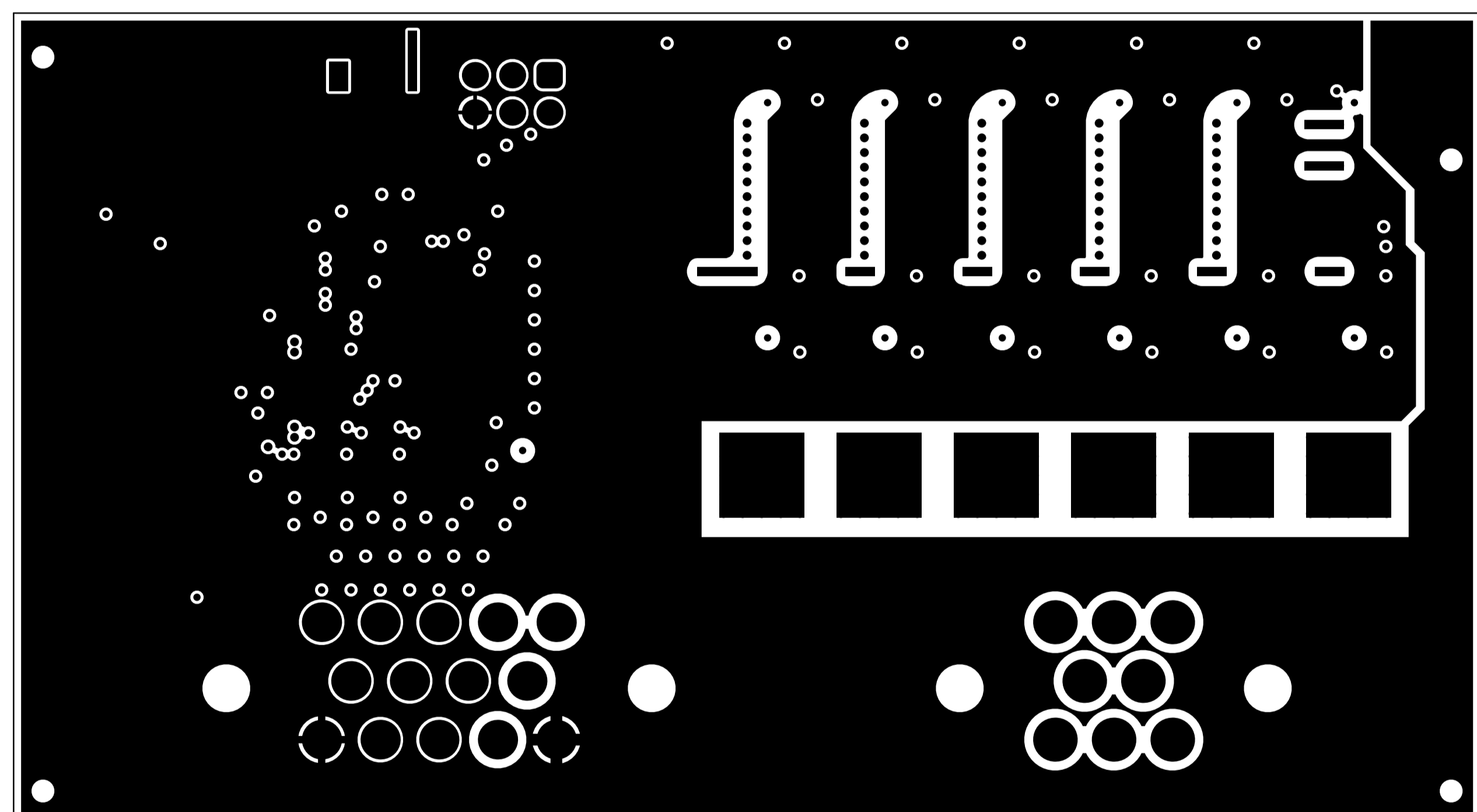
B

C

C

D

D



Title: PCB Drawing			MicroRally
Project: sPDM-620			
Revision: r1	Size: A4	Scale: 1:1	Engineer: Andis Zile
File: sPDM-620.PcbDoc			Date: 10.04.2024

1

2

3

4

1

2

3

4

A

A

B

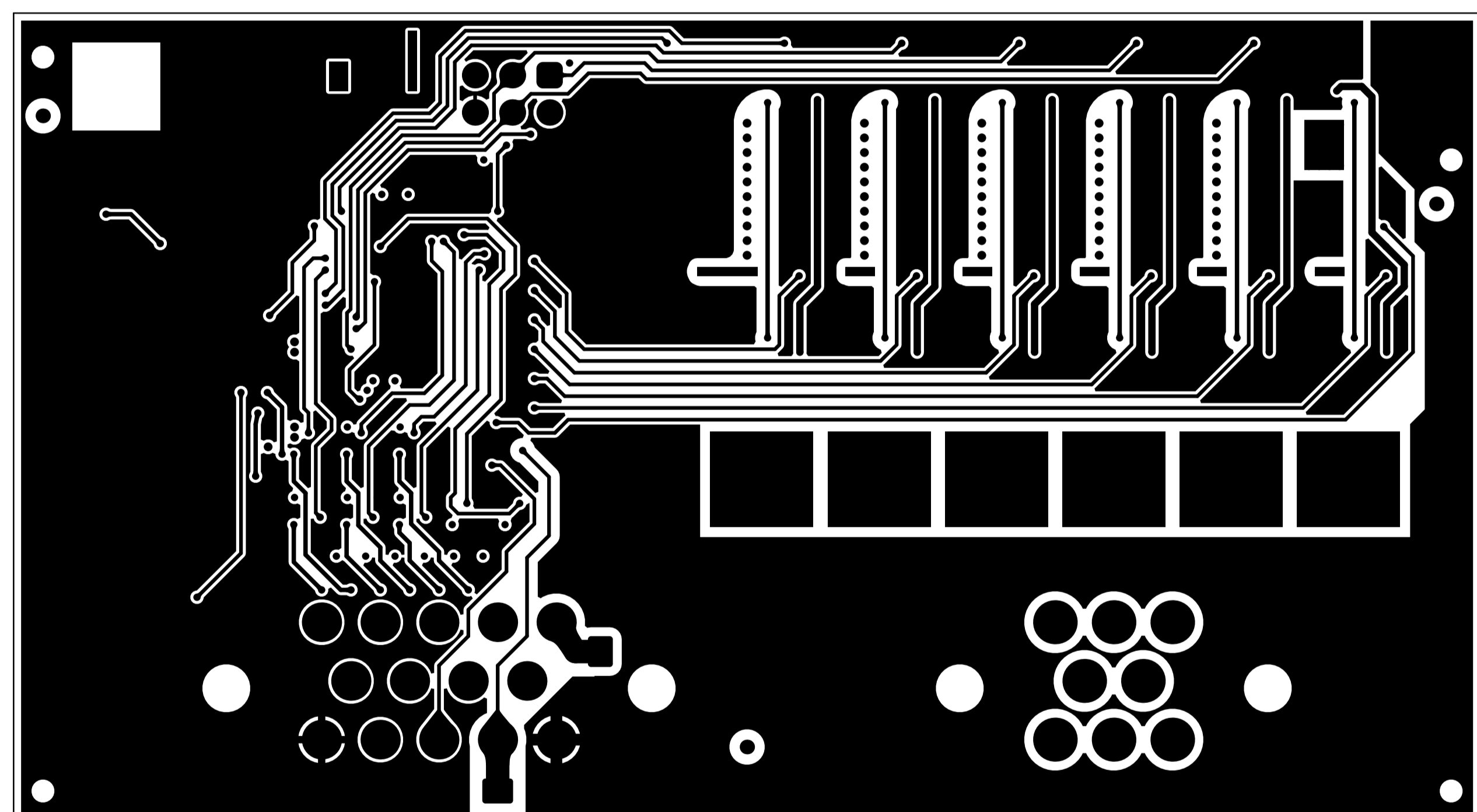
B

C

C

D

D



Title: PCB Drawing			MicroRally
Project: sPDM-620			
Revision: r1	Size: A4	Scale: 1:1	Engineer: Andis Zile
File: sPDM-620.PcbDoc			Date: 10.04.2024

1

2

3

4

